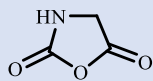


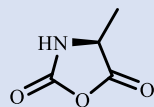
NCA

Gly-NCA



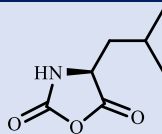
CAS: 2185-00-4

Ala-NCA



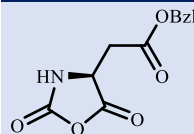
CAS: 2224-52-4

Leu-NCA



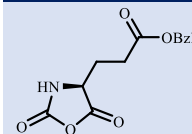
CAS: 3190-70-3

Asp(OBzl)-NCA



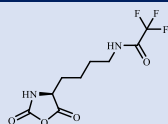
CAS: 13590-42-6

Glu(OBzl)-NCA



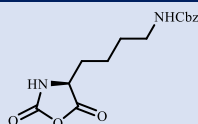
CAS: 3190-71-4

Lys(Tfa)-NCA



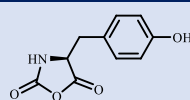
CAS: 42267-27-6

Lys(Cbz)-NCA



CAS: 1676-86-4

Tyr-NCA



CAS: 3415-08-5

六方よし!



PHARMABEYOND CO., LTD.
TEL 045-274-2459 <http://p-beyond.com/>